

QPS2-6000-18000-A

SPDT, 6~18GHz, Absorptive

Features:

- * Low Insertion Loss
- * High Isolation

Applications:

- * Wireless
- * Transmitter
- * Laboratory Test
- * Radar

Electrical

Frequency:	6~18GHz
Insertion Loss:	3.2dB max.
Isolation:	60dB min.
VSWR:	2.2 max.
Voltage:	-5V, +5V DC
Current:	50mA, 50mA typ.
Power:	23dBm max.
On/Off Delay:	50nS max.
Control:	TTL High - 1 TTL Low/NC - 0
Impedance:	50Ω

Mechanical

Size*1:	30*20*12mm 1.181*0.787*0.472in
RF Connectors:	SMA Female
Power Supply Connectors:	Feed Through/Terminal Post
Housing Material:	Aluminum
Mounting:	2-Φ2.2mm through-hole

[1] Exclude connectors.

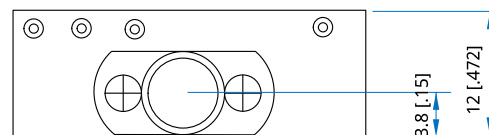
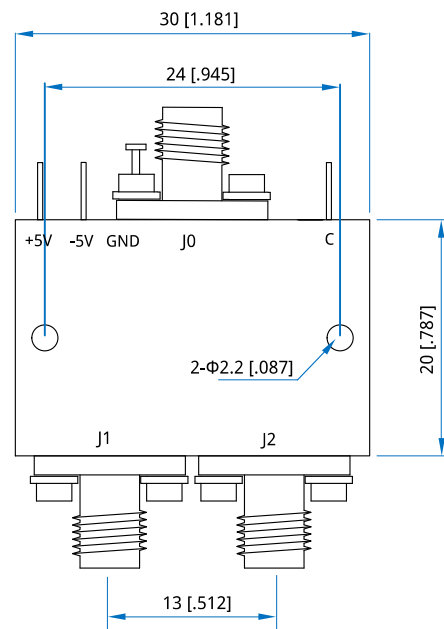
Environmental

Operating Temperature:	-40~+70°C
------------------------	-----------

Control True Table

Ctrl	Connection
0	J0 - J1 On
1	J0 - J2 On

Outline Drawings



Unit: mm [in]

Tolerance: ±0.2mm [±0.008in]

How To Order

QPS2-6000-18000-A

Customization is available upon request.